



MARGETICH REAL ESTATE & DEVELOPMENT PROJECTS



CURRENT PROJECTS

Southpointe Folsom Ranch | Folsom, CA | Ground Up Development



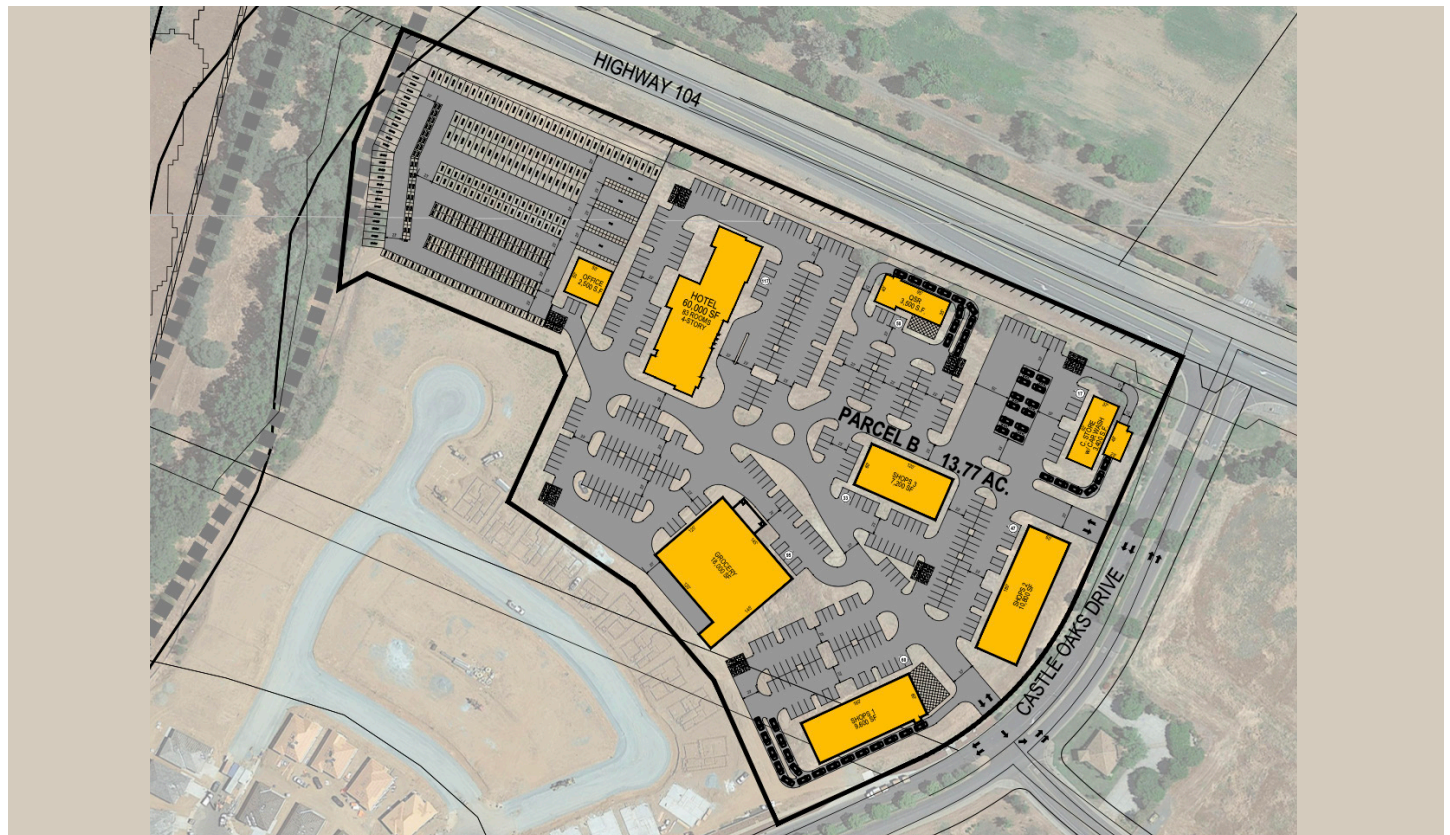
- 1. SITE PLAN
- 2. GENERAL NOTES
- 3. LEGEND
- 4. DIMENSIONS
- 5. MATERIALS
- 6. FINISHES
- 7. UTILITIES
- 8. LANDSCAPE
- 9. CONSTRUCTION
- 10. SCHEDULE



Twin Creek Professional Park | Roseville, CA | Redevelopment



Castle Oaks Town Center | Lone, CA | Ground Up Development



Clearlake Marketplace | Clearlake, CA | Ground Up Development





RECENT PROJECTS

Quail Park Folsom | Folsom, CA | Investment & Redevelopment



Pacific Sierra Business Park | Rancho Cordova, CA | Redevelopment



Orchard Plaza Shopping Center | Yuba City, CA | Redevelopment



Orchard Plaza Shopping Center | Yuba City, CA | Redevelopment



Pavilions South Shopping Center | Sacramento, CA | Redevelopment



Sizzler | Sacramento, CA | Build-to-Suit



16th & G St. | Sacramento, CA | Redevelopment



Gold's Gym | Elk Grove, CA | Build-to-Suit



Gold's Gym | Elk Grove, CA | Build-to-Suit



Goldenland Business Park | Sacramento, CA | Acquisition & New Development



Hampton Inn & Suites (development pad) | Elk Grove, CA | New Development



Longport Retail | Elk Grove, CA | New Retail Development



Rocklin Sierra Plaza | Rocklin, CA | New Development Office & Retail



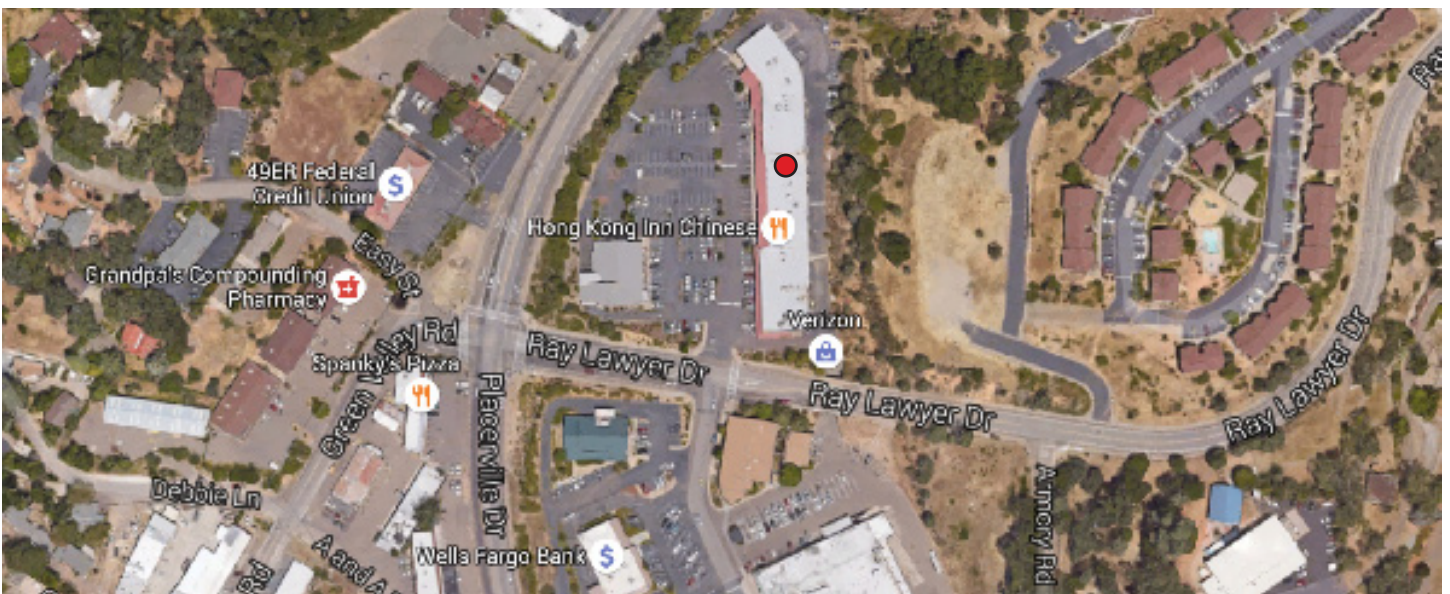
Rocklin Sierra Plaza | Rocklin, CA | New Development Office & Retail



Tahoe Keys Business Park | Tahoe Keys, CA | New Development



Discovery Plaza | Placerville, CA | New Development



1765 Challenge Way | Sacramento, CA | Redevelopment



1515 River Park Drive | Sacramento, CA | Redvelopment





COMMERCIAL DEVELOPMENT

OFFICE
MEDICAL-OFFICE
RESTAURANTS
RETAIL
FITNESS FACILITIES
BUILD-TO-SUIT
GROCERY
DESIGN
LAND PLANNING
ENTITLEMENTS
CONSTRUCTION